

# CERTIFICATE OF LOCATION OF GOVERNMENT CORNER

NORTH QUARTER Corner of Section 9, Township 107, Range 39, 5TH P.M.

STATE OF MINNESOTA, County of MURRAY

At the corner location shown on the sketch:

☒ On 6/7/2024 found a 1/2" iron with seal #44996. Ties are good.  
DATE

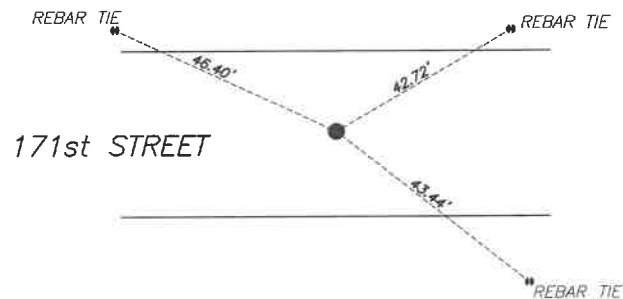
☒ left monument as found, ☐ lowered monument, ☐ removed monument (explain)

☐ On \_\_\_\_\_ placed a \_\_\_\_\_  
DATE

## SKETCH OF REFERENCE TIES



● MONUMENTS FOUND



Murray County  
Coordinate System NAD83 (1996)  
N: 189912.982  
E: 561432.474

WGS84  
LAT: 44°05'40.0081"  
LON: -95°31'58.2808"

Statement of evidence relative to this corner location is on back of page.

I hereby certify that this document and the data contained herein was prepared by me or under my direct supervision.

Daniel L. Bueltel  
License No. 43844

3/12/2025  
DATE

MAR 13 2025

MURRAY COUNTY RECORDER

Statement of Evidence

NORTH QUARTER SECTION 9, T107N, R39W of the 5th P.M.

In July of 1861, J.W. Myers surveyed the township lines.

In September of 1861, L. Brockmann subdivided the township.

In December 2019 Jesse Zeig, L.S. #44996, shows that he set a  $\frac{1}{2}$ " iron pipe at the corner.

In September 2020 Westwood Professional Services searched and found an iron with cap LS #44996 at the corner.

On June 7, 2024 Bueltel-Moseng Land Surveying found a  $\frac{1}{2}$ " iron with survey cap #44996.